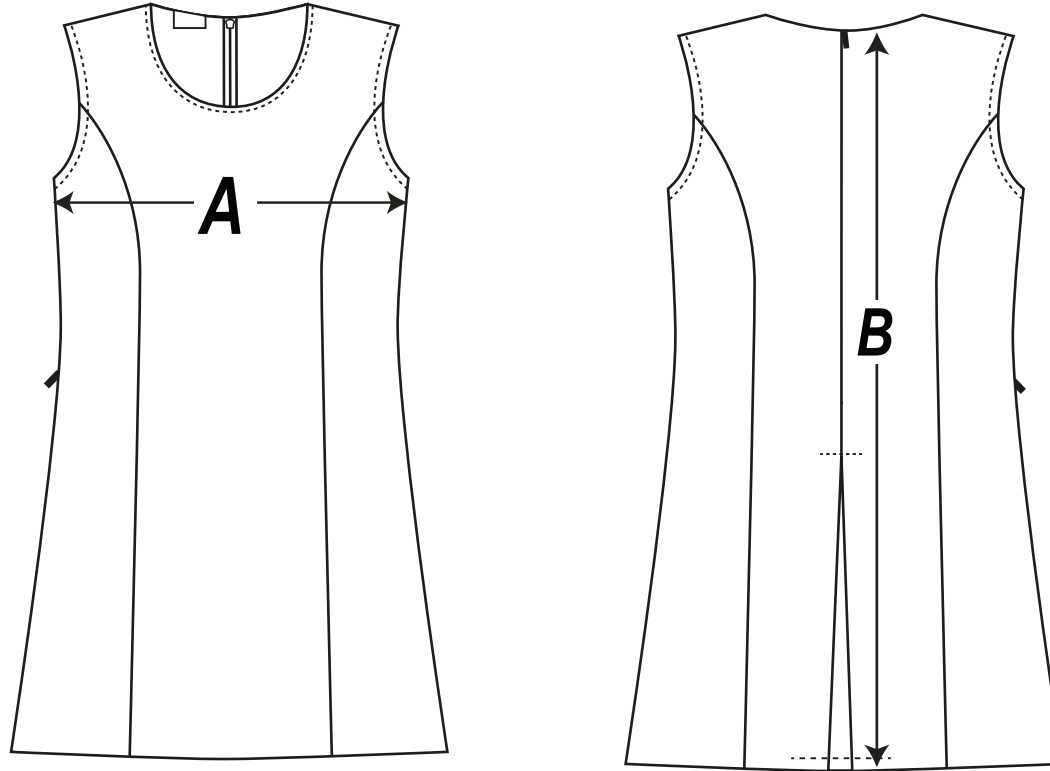


## How to measure guide



A - Measure from 2cm below armhole across chest

B - Measure from top of back neck to bottom of hem

### TUN01 Abbey Winter Tunic

SIZE	4	6	8	10	12	14	S	M
A - 1/2 Chest - cm	61	69	74.5	81	87	93	96.5	99
B - Centreback Length - cm	62	70	75.5	82	88	94	97.5	100

Listed are garment measurements, not body measurements.

When using the size chart, please measure an equivalent garment to determine the students size.