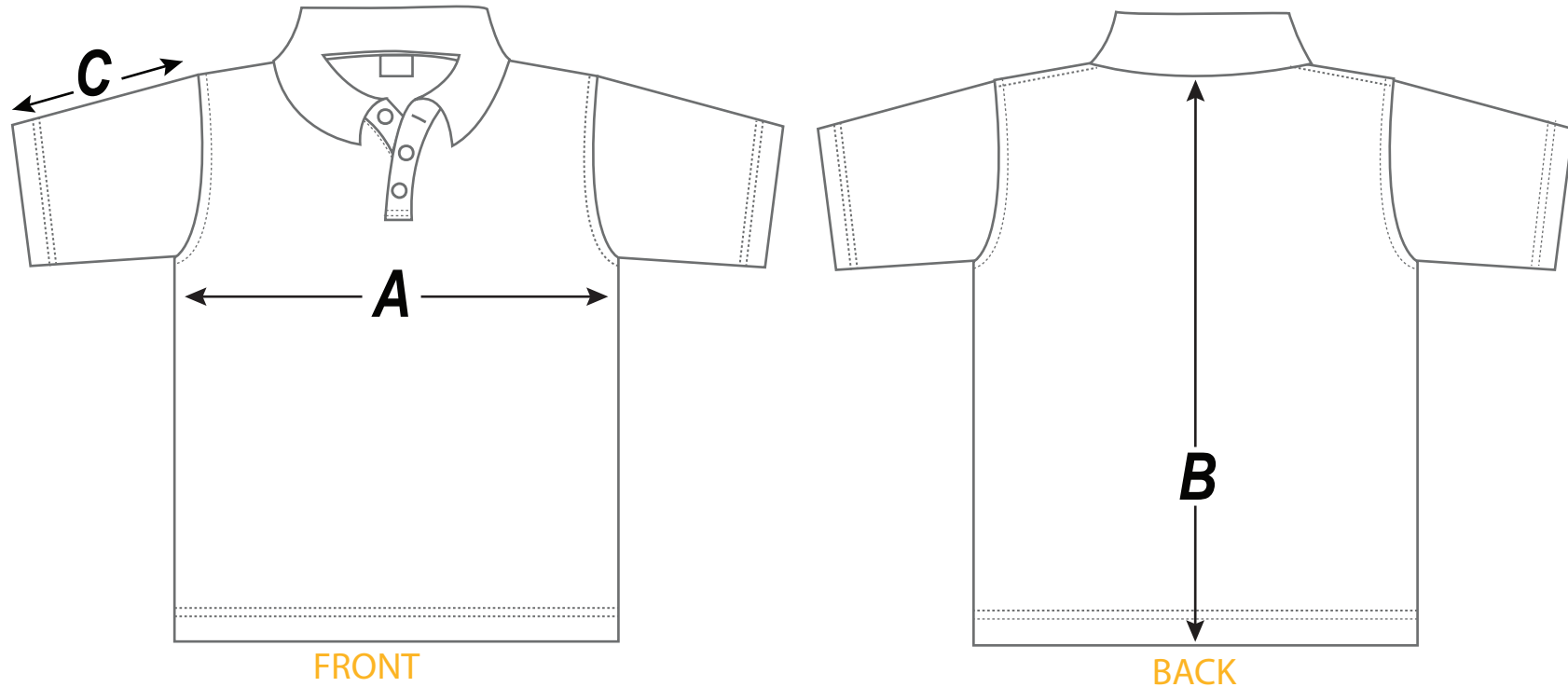


How to measure guide



- A - Measure 2cm below armhole across 1/2 chest
- B - Measure from base of neck to bottom hem
- C - Measure from shoulder point to sleeve hem

POL01 Short Sleeve Polo Shirt													
SIZE	2	4	6	8	10	12	14	S	M	L	XL	2XL	3XL
A - Across Front cm	35.5	38	40.5	43	45.5	48	50.5	53	56	59	61.5	64	66
B - Centreback Length cm	43	47	51	55	59	63	67	70	72	74	75	76	77
B - Sleeve Length cm	14.5	15.5	16.5	18	20	22	24	25	26	27	28	29	30

Listed are garment measurements, not body measurements.

When using the size chart, please measure an equivalent garment to determine the students